

## AT-HPF-0930HC

2022-3-21

## 9-30GHz High Pass Filter, 2.92mm



### Product Overview

AT Microwave offers high performance coaxial filter from low frequency to 67GHz, including BPF-Band Pass Filter, LPF-Low Pass Filter and HPF-High Pass Filter.

These filters are based on MMIC technology with small size and fast delivery time.

More information, please visit [www.atmicrowave.com](http://www.atmicrowave.com)

### Advantages

- ✓ Low Insertion Loss
- ✓ Good Return Loss
- ✓ High Stop Band Suppression
- ✓ Sharp Roll-Off

### Application

- ✓ Automotive Radar Test
- ✓ FOD (Foreigner Objects Debris)
- ✓ Test Equipment
- ✓ ROF (RF Over Fiber)
- ✓ Radar System

### Key Features

| Parameter               | Min  | Typical | Max    |
|-------------------------|------|---------|--------|
| Passband Frequency      |      | 9-30GHz |        |
| Passband Insertion Loss |      | -1.6 dB | -3.5dB |
| Passband Return Loss    | -8dB | -15 dB  |        |
| Rejection@ 6GHz         | -15  | -20dB   |        |
| Rejection@ 5.6GHz       | -35  | -40dB   |        |
| Spec Temp               |      | 25C     |        |





# AT-HPF-0930HC

Coaxial High Pass Filter

## Mechanical Information

| Item          | Description   |
|---------------|---------------|
| RF1 Port      | 2.92mm Female |
| RF2 Port      | 2.92mm Male   |
| Case Material | Brass         |
| Finish        | Gold Plated   |
| Weight        | 25g           |
| Size:         | See outline   |

## Absolute Maximum Ratings Table

| Parameter             | Value        |
|-----------------------|--------------|
| RF Power              | +30dBm       |
| Operating Temperature | -40 to +85C  |
| Storage Temperature   | -65 to +150C |

## Part Number Selection Guide

| Item           | Description                |
|----------------|----------------------------|
| Part Number    | In Default, Female to Male |
| Part Number-FF | RF1=Female, RF2=Female     |
| Part Number-MM | RF1=Male, RF2=Male         |

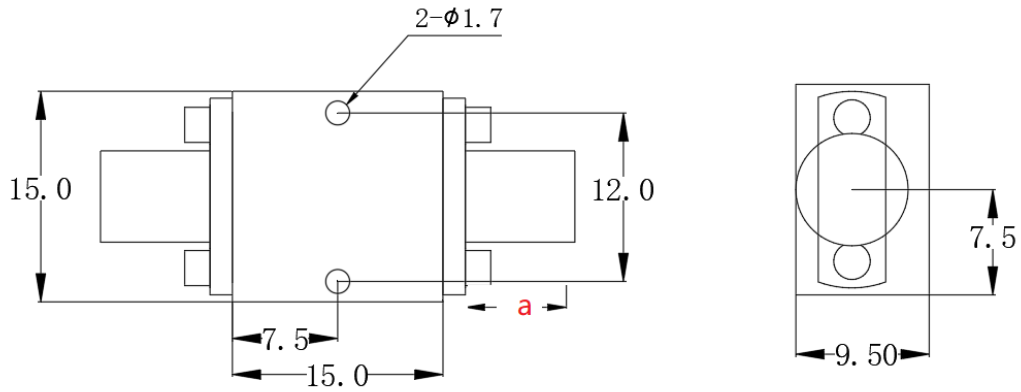
## Test Result

Performance may vary slight from unit to unit.

To be added.



## Dimension ( mm)



|            | <26.5GHz | <40GHz | <50GHz | <67GHz |
|------------|----------|--------|--------|--------|
| Connector  | SMA      | 2.92mm | 2.4mm  | 1.85mm |
| Lenth of a | 9.4mm    | 9.5mm  | 10.8mm | 11.3mm |

Note: Female Default. Contact with us for other types.

